

SST58D SERIES

深圳市华工捷信科技有限公司

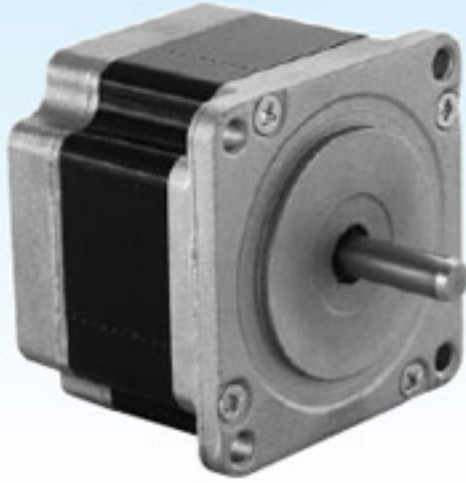
tel: 0755-86050227 13923484902 qq:26054248

ハイブリッドステップモータ (2相)

2 Phase Hybrid Step Motor

www.szhgjx.net

□56mm (NEMA 23)



標準タイプ Standard Model

1.8°

RoHS

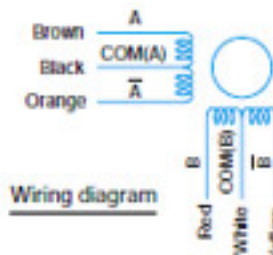
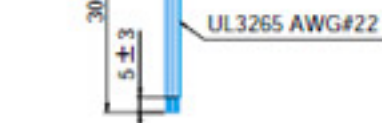
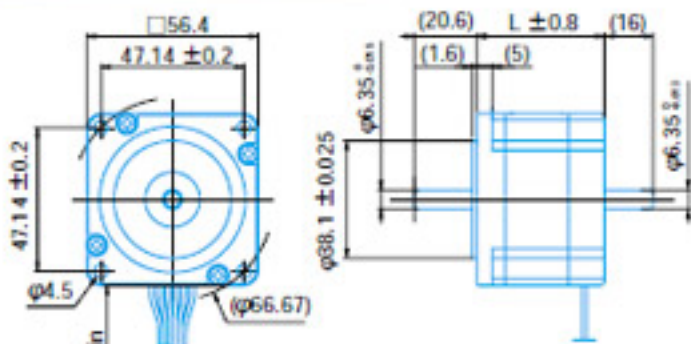
Unipolar

SPECIFICATIONS 6本リード (6 LEADS)

MODEL	STEP ANGLE deg	VOLTAGE V	CURRENT A/φ	RESISTANCE Ω/φ	INDUCTANCE mH/φ	HOLDING TORQUE mN·m	ROTOR INERTIA g·cm ²	NUMBER OF LEADS LEAD	MASS kg	LENGTH mm
SST58D112X	1.8	3.8	1.2	3.20	3.80	441	372	6	0.49	42
SST58D120X	1.8	2.4	2.0	1.20	1.30	441	372	6	0.49	42
SST58D130X	1.8	1.5	3.0	0.50	0.54	441	372	6	0.49	42
SST58D212X	1.8	5.0	1.2	4.20	6.70	710	637	6	0.60	49
SST58D220X	1.8	3.0	2.0	1.50	2.60	710	637	6	0.60	49
SST58D230X	1.8	2.2	3.0	0.73	1.10	710	637	6	0.60	49
SST58D312X	1.8	6.0	1.2	5.00	10.00	878	725	6	0.71	54
SST58D320X	1.8	3.4	2.0	1.70	3.60	878	725	6	0.71	54
SST58D330X	1.8	2.1	3.0	0.70	1.30	878	725	6	0.71	54
SST58D412X	1.8	6.2	1.2	5.20	8.20	1080	921	6	0.86	65
SST58D420X	1.8	3.6	2.0	1.80	3.00	1080	921	6	0.86	65
SST58D430X	1.8	2.4	3.0	0.80	1.30	1080	921	6	0.86	65
SST58D512X	1.8	8.4	1.2	7.00	14.00	1390	1176	6	1.10	77
SST58D520X	1.8	4.8	2.0	2.40	5.10	1390	1176	6	1.10	77
SST58D530X	1.8	3.0	3.0	1.00	2.20	1390	1176	6	1.10	77

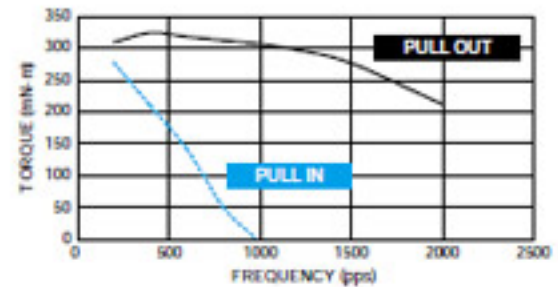
末尾 (Final Number) 0: 片軸 (Single Shaft) 1: 両軸 (Double Shaft)

DIMENSIONS (Example)



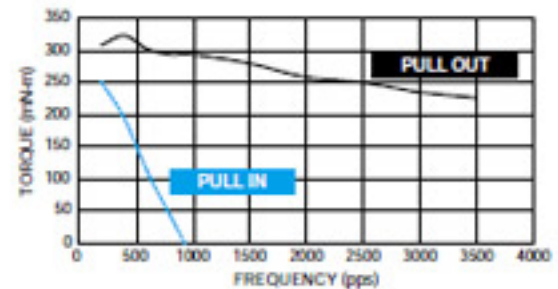
SST58D1120

DRIVER : TYPE B (Vs=24v)
CURRENT = 1.2 A/Phase
EXCITING MODE = 2 Phase
INERTIA LOAD : 100g·cm²



SST58D1200

DRIVER : TYPE B (Vs=24v)
CURRENT = 2.0 A/Phase
EXCITING MODE = 2 Phase
INERTIA LOAD : 100g·cm²



SST58D1300

DRIVER : TYPE B (Vs=24v)
CURRENT = 3.0 A/Phase
EXCITING MODE = 2 Phase
INERTIA LOAD : 100g·cm²



深圳市华工捷信科技有限公司

tel: 0755-86050227 13923484902 qq:26054248

www.szhgjx.net