

柱塞泵规格书




(PISTON PUMP SPECIFICATION)

公司名称 东莞信浓马达有限公司
(COMPANY NAME) DONGGUAN SHINANO MOTOR CO., LTD

产品名称 柱塞泵
(PRODUCT NAME) PISTON PUMP

型号 STPP-43D3-Y18-00500
(MODEL)

规格书 Y-18-1549-0
(SPECIFICATION)

设计担当 DESIGNED	检图 CHECKED	检印 CHECKED
		

1. 适用范围/ SCOPE

本规格书概括了柱塞泵STPP-43D3-Y18-00500的基本要求
THIS SPECIFICATION COVERS THE PISTON PUMP
STPP-43D3-Y18-00500 THAT CONSISTS OF BIPOLAR WINDING
STATOR AND HYBRID MAGNET ROTOR

2. 应用范围/ APPLICATION

柱塞泵可应用于酸碱溶液的精密添加，微量取样，连续定量输入
PISTON PUMP CANBE USED FOR ACID BASE DISSOLUTION PRECISE
ADDITION MICRO SAMPLING AND CONTINUOUS QUANTITATIVE INPUT

3. 柱塞泵规格/ PISTON PUMP CHARACTERISTICS

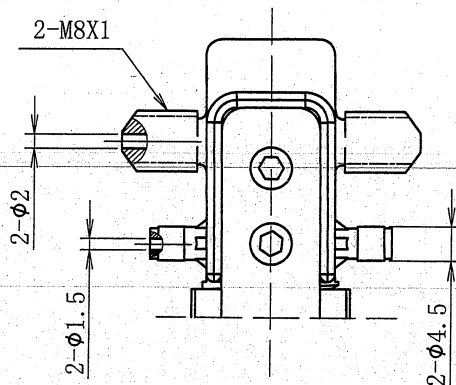
型号/MODEL	STPP-43D3-Y18-00500	
每转流量/FLOW PER TURN	ml	0.05
转速/SPEED	rpm	5-300
流量精度/FLOW ACCURACY		±1%
最大压力/MAX PRESSURE	kpa	150
液体温度范围 LIQUID TEMPERATURE RAGE	° C	0-40
清洗液温度范围 CLEANING LIQUID OF TEMPERATURE RANGE	° C	0-95
电机/MOTOR	两相步进电机	
外形尺寸/OUTLINE SIZE	mm	56x56x150

4. 底物泵材质/ CAM PISTON PUMP OF MATERIALS

泵头材料/HEAD MATERIAL	PVDF
柱塞材料/PISTON MATERIAL	氧化锆
防水垫片材料/SHIM MATERIALS	PTFE
轴材料/SHEFT MATERIALS	氧化锆
安装板/SHEET MATERIAL	AL

5. 连接/ CONNECTION

柱塞泵进水口出水口外螺纹M8x1
PISTON PUMP OF THE OUTSIDE AND INSIDE IS OUTTEMAL THREAD M8x1



6. 重量/ WEIGHT:
约/ABOUT 530g

7. 电机规格/ MOTOR SPECIFICATION

1) 电机式样/ MOTOR TYPE

配置信浓的双极性高力矩步进电机STP-43D3
CONFIGURATION OF SKY DUAL STAGE ENERGETICALLY
DISTANCE STEPPER MOTOR STP-43D3

2) 电机特性/ MOTOR CHARACTERISTICS

驱动电压/DRIVE VOLTAGE	24V
额定电流/RATED CURRENT	0.6A
步进角/STEP ANGLE	1.8°
相数/NUMBER OF PHASE	2相 双极/2PHASE BIPOLAR
电阻/ RESISTANCE	6.6Ω±10%
电感/ INDUCTANCE	13mH±20%

3) 编码器式样/ ENCODER SPECIFICATION

输入电压/INPUT VOLTAGE	DC 5V±10%
输出波形/OUTPUT WAVE	方波/SQUARE WAVE
输出信号相数 OUTPUT SIGNAL OF CHANNEL	1 (CHA)
输出信号电压 OUTPUT SIGNAL OF VOLTAGE	DC 5V±10%
相位误差/PHASE ERROR	a=180° ±30°

4) 电机励磁顺序(2相励磁)

MOTOR PHASE SEQUENCE (2PHASE EXCITING)

STEP	A	B	\bar{A}	\bar{B}
1	+	+	-	-
2	-	+	+	-
3	-	-	+	+
4	+	-	-	+
5	+	+	-	-

5) 编码器器引线颜色

COLOR OF LEAD WIRES

编码器器引线颜色 COLOR OF LEAD ENCODER	红 RED	黑 BLACK	黄 YELLOW
编码器引线配置 LEAD CONFIGURATION	+5V	GND	A相

6) 电机对接连接件

MATING CONNECTOR

电机插接件 MOTOR HOUSING	JST PHR-6	颜色:自然色 COLOR:NATURAL
编码器接插件 ENCODER HOUSING	MOLEX 43020-0400	颜色:黑色 COLOR:BLACK

7) 电机基座母插

MOTOR BASE CONNECTOR

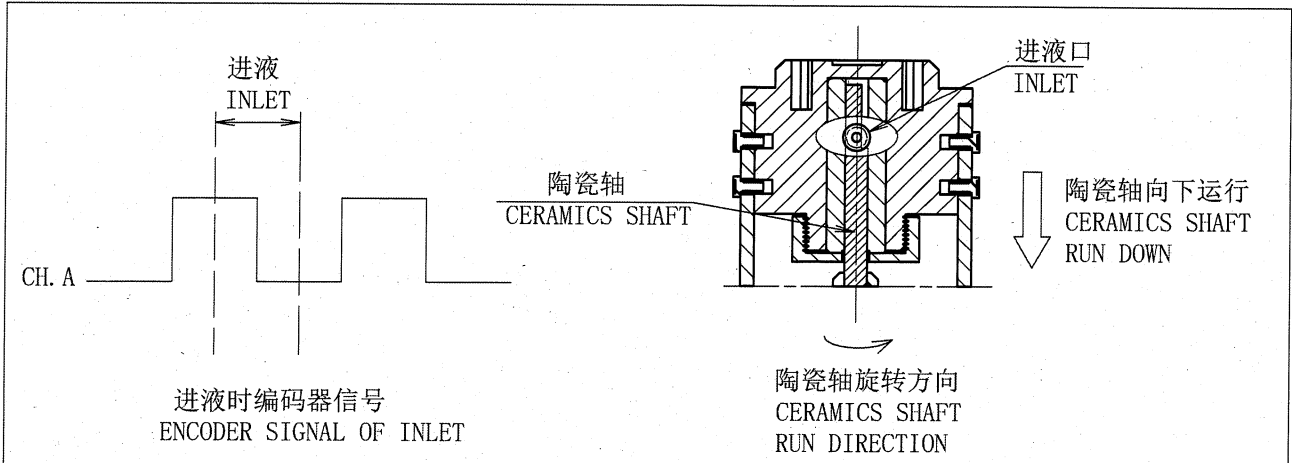
电机基座母插 MOTOR BASE CONNECTOR	JST S 6B-PH-K-S(LF) (SN)	颜色:自然色 COLOR:NATURAL
--------------------------------	--------------------------	-------------------------

8. 编码器与进液出液关系

ENCODER AND LIQUID INLET OR OUTLET OF STATE

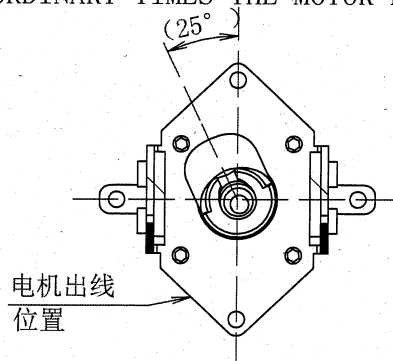
1) 编码器信号为高电平(CH. A)时, 高电平一半位置为陶瓷轴运行到最高处, 此时进液口与陶瓷轴D台相切, 陶瓷轴运行, 进液口开始吸入液体

ENCODER SIGNAL IS HIGH LEVEL CERAMIC SHAFTS (CH. A) ARE RUN TO THE HIGHEST POINT AN THEN THE LIQUID INLET AND THE CERAMIC SHAFT D ARE TANGENT THE CERAMIC SHAFT RUN ANT THE LIQUID INLET PORT BEGAN LIQUID



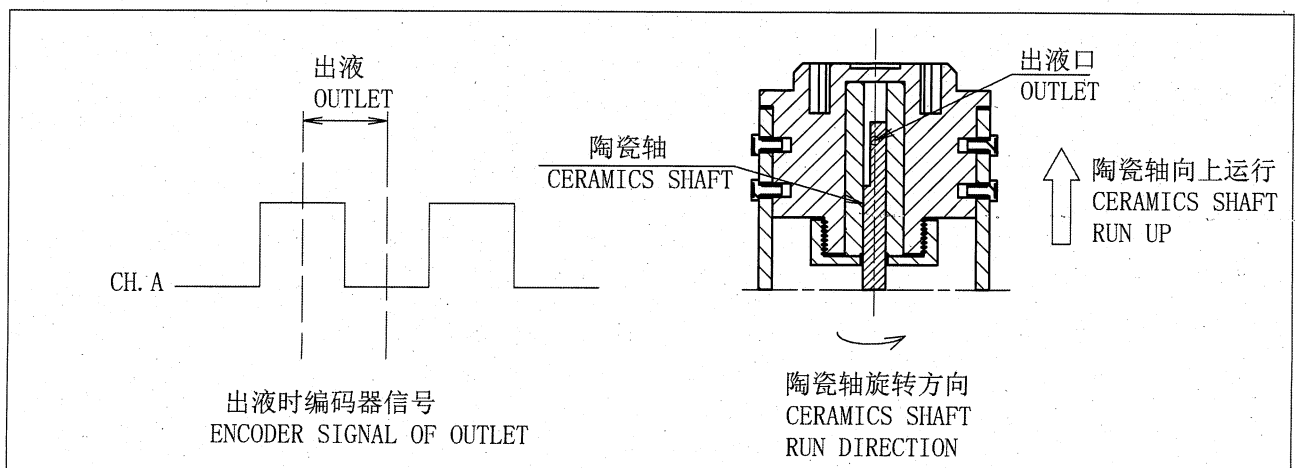
2) 柱塞泵停止位置为进液开始时, 编码器信号为低电平(CH. A)时, 电机反转运行约25°

AT THE START OF THE PUMP STOP POSITION FOR INTO THE LIQUID ENCODER SIGANL FOR LOW ELECTRICITY (CH. A) AT ORDINARY TIMES THE MOTOR REVERSE 25°

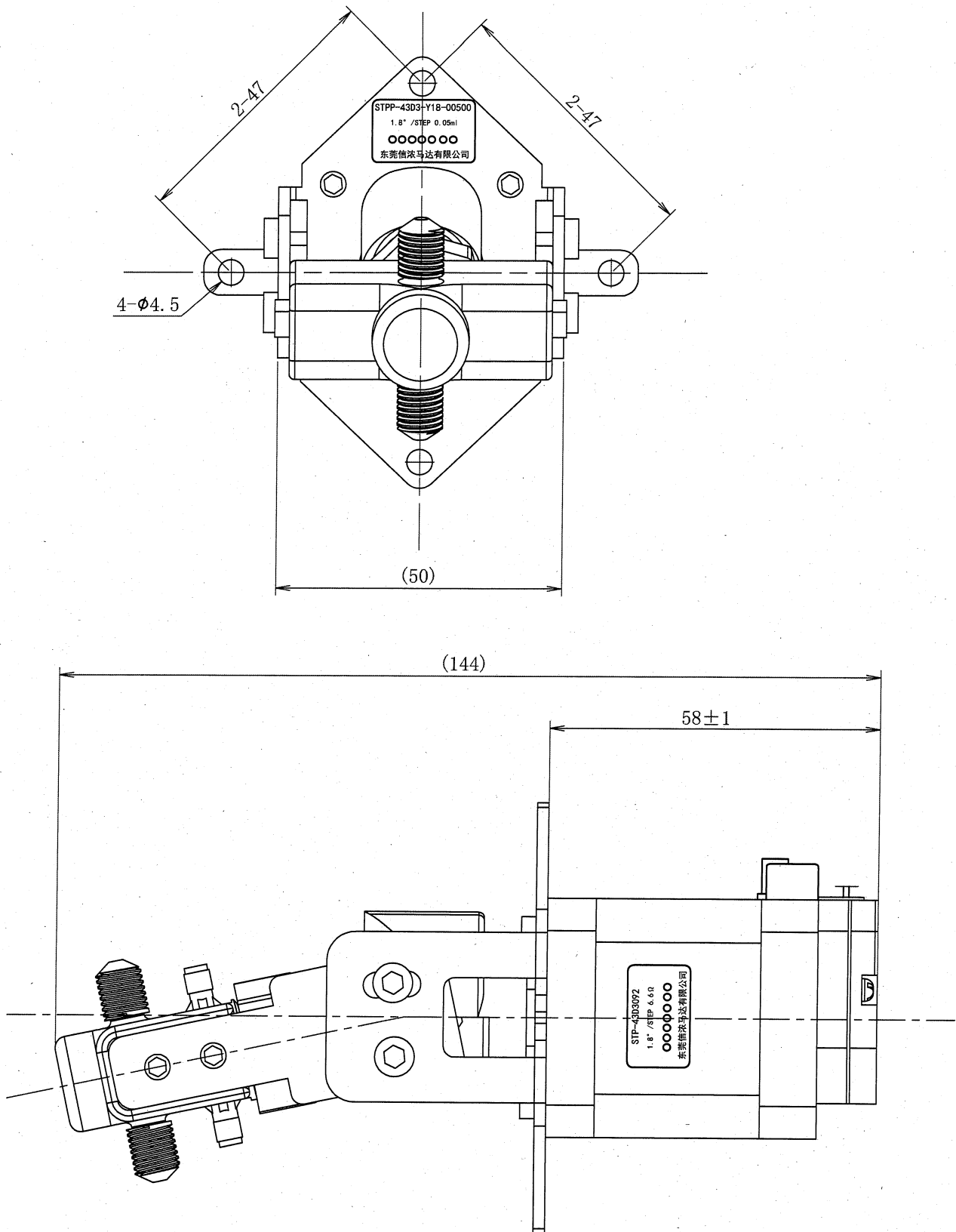


3) 编码器信号为低电平(CH. A)时, 低电平一半时陶瓷轴运行到最低处, 此时出液口与陶瓷轴D台相切, 陶瓷轴运行, 出液口开始输出液体

ENCODER SIGNAL IS LOW LEVEL CERAMIC SHAFTS (CH. A) ARE RUN TO THE DOWN POINT AN THEN THE LIQUID OUTLET AND THE CERAMIC SHAFT D ARE TANGENT THE CERAMIC SHAFT RUN ANT THE LIQUID OUTLET PORT BEGAN LIQUID



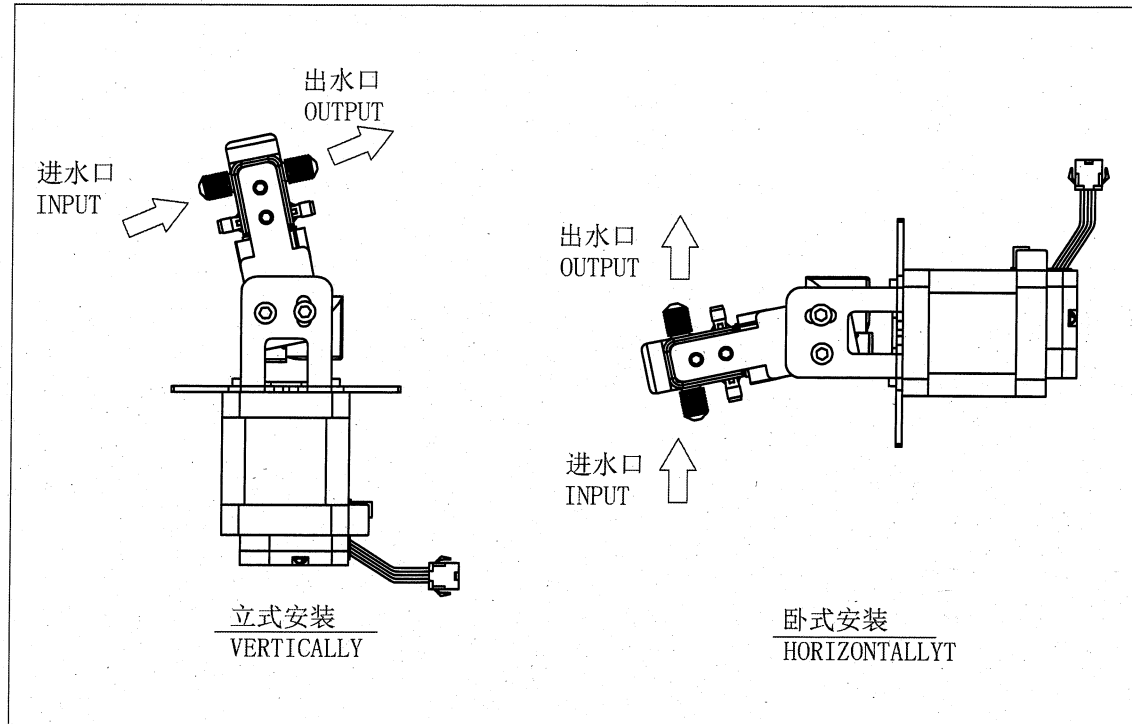
10. 柱塞泵外形图/ PISTON PUMP SHAPE



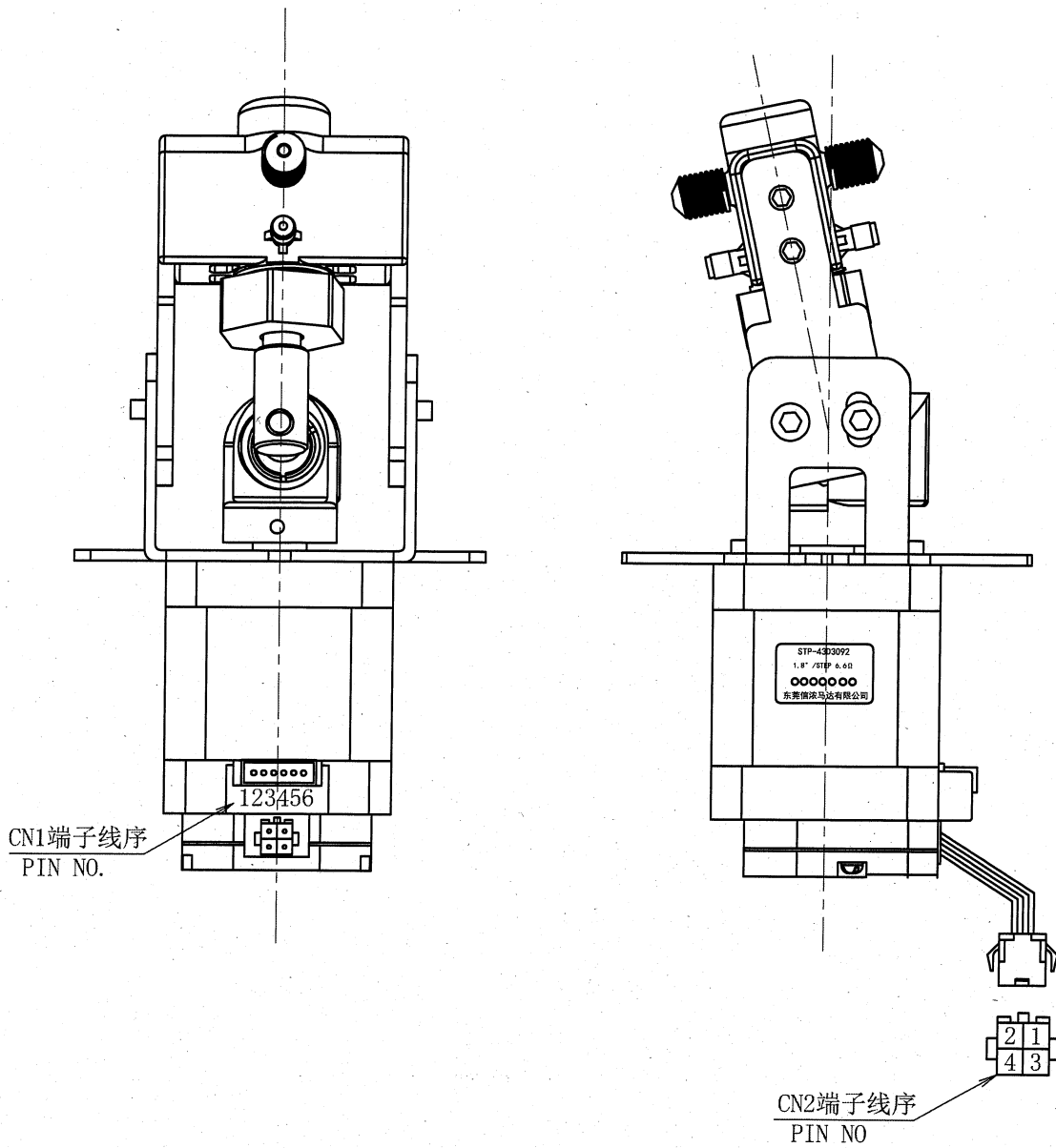
9. 安装方式/ INSTALLATION METHOD

如下图所示直式或卧式安装，将柱塞泵使用4颗螺钉固定在安装板上，使液体总是向上流动

DIRECT THE PUMP VERTICALLY OR HORIZONTALLY AS SHOWN BELOW
AND FIX THE PUMP FRAME ON A MOUNTING PLATE WITH FOUR SCREWS



11. 柱塞泵接线图/ PISTON PUMP SHAPE



1) 电机引线线序/LEAD WIRE

CN1端子线序 PIN NUMBER	1	2	3	4	5	6
电机引线配置 LEAD CONFIGURATION	A	--	\bar{A}	B	--	\bar{B}

2) 编码器引线线序/LEAD WIRE

编码器引线颜色 LEAD COLOR	黑 BLACK	红 RED	蓝 BLUE	黄 YELLOW
CN2端子线序 PIN NUMBER	4	3	2	1
编码器引线配置 LEAD CONFIGURATION	GND	+5V	B相	A相

12. 注意事项

CAUTION AND RECOMMENDATION

- 1) 不可拎着柱塞泵引线拿取柱塞泵 柱塞泵引线出口处请不要作用外力
PLEASE DON'T HOLD CAM PISTON PUMP BY LEAD WIRES NO OUTSIDE FORCE
ON THE EXIT OF LEAD WIRES
- 2) 通电状态下不可插拔柱塞泵插头
PLEASE DON'T PLUG OR UNPLUG CAM PISTON PUMP CONNECTOR WHILE POWER ON
- 3) 请不要使柱塞泵落地以及碰撞柱塞泵如有此类情况发生 即使当时柱塞泵可以使用
但质量将不能得到保证
PLEASE DON'T DROP AND BUMP CAM PISTON PUMP AGAINST HARD MATERIAL
MALFUNCTION MAY NOT BE OBSERVED AT EARLY STAGE AFTER SUCH SHOCK
BUT IT MAY BE FOUND LATER THIS TYPE OF MISHANDLING VOIDS
OUR WARRANTY
- 4) 请顾客方对柱塞泵在实际装配的状态进行确认 验证实际使用时的适用性
THE FUNCTION OR PERFORMANCE SHALL BE EVALUATED BY INSTALLING CAM
PISTON PUMP TO APPLICATION THAT SHOULD BE CHECKED AT BUYER'S SIDE